



轴承

Water pump bearing

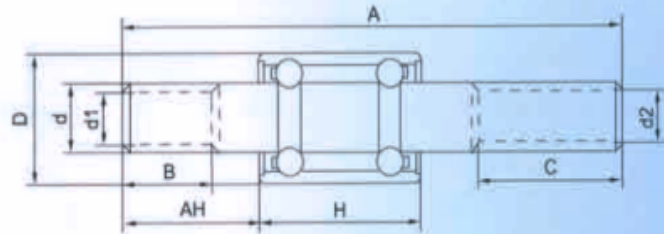
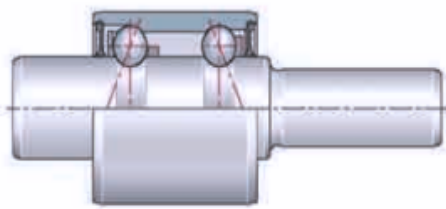
01

EVERGOLD HOLDING CO., LTD

www.eg-holding.com

WATER PUMP BEARING

(Ball+ball)



轴承型号 Designation					基本 Boundary dimensions mm								备注 Remarks	
E.G	NSK	FAG	RHP	KOYO	D	H	A	AH	d	d1	d2	B	C	
WB1224065		395837			24	33.38	65.41	16	12.038					
WB1224079		395671B			24	33.38	78.83	17	12.038					
WB1224083-1		395835			24	33.38	82.73	16	12.038					
WB1224083					24	25	83	21	12					
WB1224084		395726			24	33.38	83.9	22.2	12.038					
WB1224085					24	27	85	21	12.038					
WB1226086					26	39	86	12	12					
WB1226090				WPB12090BRS	26	39	89.5	16.5	12					
WB1226090-1				WPB12090ARX	26	39	90	14	12					
WB1226091				WPB12091RS	26	39	90.5	16.5	12					
WB1226093-1				WPB12093RS	26	39	92.5	16.5	12					
WB1226093					26	39	93	16	12					
WB1226094Y					26	39	94	21.5	12					
WB1226095	BWF26-14	WS2372		S1614R-5RS	26	39	94.5	21.5	12					
WB1226098				WPB12098-3RS	26	39	97.5	17.5	12					
WB1226099				S16140CRS	26	39	99	21.5	12					
WB1226102				S16140R-3RS	26	39	102.5	21.5	12					
WB1226103-1	BWF26-11	WS2407		WPB12103RS	26	39	103.5	21.5	12					
WB1226103				WPB12104ARS	26	39	103.5	17.5	12					
WB1226104					26	39	103.8	17.5	12					
WB1226106				WPB12106RS	26	39	105.5	16.5	12					
WB1226114				WPB12114RS	26	39	113.5	17.5	12					
WB1226117					26	39	117	26	12					
WB1630068				WPB16068RS	30	38.89	68.4	25	15.918					
WB1630069		W2270			30	38.89	68.66	27.8	15.918					
WB1630074			FPS878		30	38.89	73.91	11.4	15.918					
WB1630076			FPS832		30	38.89	75.6	27.01	15.918					
WB1630080D					30	30	80	18	16	12	12	17	31	
WB1630081			FPS413		30	38.89	80.95	22.48	15.918					
WB1630083D					30	30	83	18	16					
WB1630083					30	25	83.1	16	15.918					
WB1630084		W2334		WPB16084RS	30	38.89	84.4	13	15.918		12		30	
WB1630086					30	30	86	16.5	15.918		12		37	
WB1630087					30	38.89	86.5	13.5	15.918		12.038		32.7	
WB1630088					30	38.89	87.5	13.5	15.918		12		34.25	
WB1630091					30	38.89	91	13.5	15.918		12		36	
WB1630092-1			FPS337		30	38.89	91.85	20.45	15.918	12	12.675		29.34	
WB1630092D					30	38.89	92	16.5	15.918		12		34.5	
WB1630093-1				WPB16093-1RS	30	38.89	93	18.5	15.918		12		32.6	
WB1630093	885330	W2366		WPB163093-RS	30	38.89	93	18.5	15.918					
WB1630094			FPS926		30	38.89	94.5	35.11	15.918					

WATER PUMP BEARING

(Ball+ball)

轴承型号Designation				基本Boundary dimensions mm								备注Remarks		
E.G	NSK	FAG	RHP	KOYO	D	H	A	AH	d	d1	d2	B	C	
WB1630098-1			FPS519		30	38.89	97.51	23.49	15.918					
WB1630098-2	885110	W2384S			30	38.89	97.65	19.05	15.918		12.675		36.53	
WB1630098-3	885324		FPS849		30	38.89	97.82	17.88	15.918					
WB1630098		W2385-6			30	38.89	98	17.06	15.918					
WB1630099	885474	W2387S	FPS815	WPB16099-1RS	30	38.89	98.5	22.55	15.918		12		33.76	
WB1630099-1				WPB16099-5RS	30	38.89	98.5	16.5	15.918	12	12		40.5	
WB1630100				WPB16100ARS	30	38.89	100	24	15.918		12		35	
WB1630101					30	38.89	101	25	16		12		35	
WB1630102-1				885685RSE	30	38.89	101.5	17.5	15.918					
WB1630102A	885147		FPS1		30	38.89	102.5	22	15.918		12.675		38.5	
WB1630102-5		W2404S	FPS623	WPB16102BRSE	30	38.89	102.62	24.45	15.918		12.674		38.1	
WB1630103			FPS532	WPB16102ARSE	30	38.89	102.87	22.7	15.918		12.675		38.1	
WB1630103-4			FPS620	WPB16103ERSE	30	38.89	102.87	23.11	15.918					
WB1630103D				WPB16103-9RS	30	38.89	103	16.51	15.918		12		43	
885140	885595	W2406-2	FPS17	885140BRSE	30	38.89	103.2	23.42	15.918					
WB1630104	BWF3088				30	38.89	103.51	19.56	15.918		12		42	
WB1630104-1			FPS601		30	38.89	103.84	22.33	15.918					
WB1230104					30	38.89	104	16.25	16	12	12	14.5	46.5	
WB1630105	885602	W2412-1			30	38.89	104.65	20.3	15.918					
WB1630105-1		W2412	FPS239		30	38.89	104.68	27.05	15.918					
WB1630105-2			FPS917		30	38.89	105	47.16	15.918					
WB1630105-4					30	38.89	105.16	23.95	15.918					
885159	885159	W2414	FPS860		30	38.89	105.4	24.21	15.918					
WB1630106		W2415-1S	FPS106	WPB16105BRS	30	38.89	105.5	24.05	15.918		12		40	
WB1630106-2				WPB16106MRS	30	38.89	105.5	16.5	15.918	12	12	13.1	46	
WB1230106					30	38.89	105.65	16.25	15.918	12	12	14.5	48	
WB1630106	885490		FPS104	WPB16106-3RSEH	30	38.89	106	26.11	16					
WB1630106-1	885097	W2417-2			30	38.89	106	20.65	15.918					
WB1630106-2					30	38.89	106	25	16		12		40	
WB1630106-3		W2418-1		WPB16106DRS	30	38.89	106.17	25.15	15.918					
WB1630106-4				WPB16106JRS	30	38.89	106.12	18.5	15.918		12		41	
WB1630107				WPB16107BRSE	30	38.89	106.5	27.8	15.918	15.01	12.052	26.1	35	
WB1630108				D607010RS	30	38.89	108	21.5	15.918		12		44.5	
WB1630109-1		W2428-1		885111-D	30	38.89	108.74	27.38	15.918					
WB1630109				WPB16109RS	30	38.89	109	27.31	16		12		33.5	
WB1630110		W2431-2S			30	38.89	109.5	25.1	15.918		12.038		38.8	
WB1630110-1	885107b	W2431	FPS520		30	38.89	109.52	14.67	15.918					
WB1630110-2	885305				30	38.89	110	23.5	15.918					
885524S	885524S	W2433-2	FPS456		30	38.89	110	24	15.918		12		46	
WB1630112	885167			885167	30	38.89	111.51	23.8	15.918					
WB1630112-1		W2440-4	FPS208	885167DRSE	30	38.89	111.75	29.21	15.918					
WB1630112-2	885098	W2440-1			30	38.89	111.91	26.7	15.918					
WB1630112-3				WPB116112-5RS	30	38.89	112	25.15	15.918					
WB1630112-4	885327	W2440-5S		BWF3076B	30	38.89	112	30	15.918		12		40.49	
WB1630112-5		W2441-1			30	38.89	112	27	15.918					
WB1630112-6		W2442			30	38.89	112.4	23.37	15.918					
WB1630113-1			FPS23		30	38.89	112.52	31.26	15.918					
WB1630113-2			FPS16		30	38.89	112.67	25.52	15.918					
WB1630113-3	885614				30	38.89	122.78	30	15.918					
WB1630113-4		W2445		885155	30	38.89	113.11	31.75	15.918					

WATER PUMP BEARING

(Ball+ball)

轴承型号 Designation					基本 Boundary dimensions mm									备注 Remarks
EG	NSK	FAG	RHP	KOYO	D	H	A	AH	d	d1	d2	B	C	
WB1630113-5		W2446	FPS24		30	38.89	113.21	32	15.918					
WB1630113-6	N885156	W2447			30	38.89	113.49	27.38	15.918					
WB1630114-1					30	38.89	113.67	36.1	15.918					
WB1630114		W2450-2			30	38.89	114	24	15.918					
WB1630114-2	885697			C8DE8530-1RSE	30	38.89	114.3	32	15.918					
WB1630115-2	885133-A			885133AR	30	38.89	114.81	32	15.918					
WB1630115					30	38.89	115	26.11	16					
885167	885167		FPS153		30	38.89	115.51	27.8	15.918					
WB1630116-1	885495	W2455	FPS54		30	38.89	115.75	26.85	15.918					
WB1630116-2				WPB16116-1RS	30	38.89	116	30.06	15.918		12		43	
WB1630116					30	38.89	116	26	15.918		12		46	
WB1630117		W2462-2			30	38.89	116.5	27.5	16		13		47	
WB1630117-1				885190	30	38.89	117.35	33.96	15.918					
WB1630118		W2465			30	38.89	118.26	14.68	15.918					
WB1630119					30	38.89	119	22.5	15.918					
885118	885118	W2468	FPS122	885118RSE	30	38.89	119.07	37.31	15.918					
WB1630119					30	38.89	119.3	37.6	15.918					
WB1630119-1	885135S	W2470		885135CRSE	30	38.89	119.46	32.54	15.918					
WB1630119-2	885637				30	38.89	119.46	40.82	15.918					
WB1630120-1	885584S	W2472		885584	30	38.89	119.84	36.5	15.918					
WB1630120					30	38.89	120	31	15.918					
WB1630121-1		W2475		885222	30	38.89	120.65	38.12	15.918					
WB1630121	885105	W2476		885105	30	38.89	120.9	29.46	15.918					
WB1630122D					30	38.89	121.5	25	16		12		47.5	
WB1630122-1	885238	W2478-1	FPS659		30	38.89	121.62	31.42	15.918					
WB1630122		W2479-1		885208	30	38.89	121.87	37.26	15.918					
WB1630122-2			FPS674		30	38.89	121.92	41.37	15.918		12.675		38.1	
WB1630122-3			FPS668		30	38.89	122.12	32.96	15.918		12.7		44.7	
WB1630122-4	885476	W2481			30	38.89	122.17	33.88	15.918					
WB1630122-5	885168H		FPS290		30	38.89	122.22	28.67	15.918					
WB1630122-6	885168C	W2481-1	FPS163	885168-1	30	38.89	122.22	28.58	15.918					
885168	885168AD	W2481-2		885168AA	30	38.89	122.22	40.18	15.918					
WB1630123		W2484			30	38.89	123.04	36.86	15.918					
WB1630124-1					30	57.15	123.2	25.5	15.918					
WB1630124-2			FPS109	WPB16124RS	30	38.89	124	42.61	15.918		12		40	
WB1630124-3	885326	W2488S		BWF3089	30	38.89	124	41.78	15.918		12		40.49	
WB1630124					30	38.89	124	21	15.918					
WB1630124-4	885245	W2489-2	FPS923	885245RSE	30	38.89	124.4	40	15.918					
WB1630125			FPS188		30	38.89	124.5	30.14	15.918		15.817		40.64	
WB1630125-1	885534S				30	38.89	124.97	39.12	15.918					
WB1630126		W2496			30	38.89	126	34.3	15.918					
WB1630127-1			FPS204	885142-C	30	38.89	127	44.55	15.918					
WB1630127-2			FPS374	WOB16127CRSE	30	38.89	127	37.94	15.918		12.7		35.56	
WB1630127-3	885142D	W2500-2			30	38.89	127	32.56	15.918					
WB1630128					30	38.89	127.7	22.41	15.918					
WB1630128-1	885151B	W2405-6		885151-B	30	38.89	127.79	44.45	15.918					
WB1630128-2	885141		FPS18	885141RSE	30	38.89	127.79	25.8	15.918					
885169	885169	W2507	FPS42	885169-1	30	38.89	129	31.75	15.918					
WB1630130					30	38.89	130	41	15.918					
WB1630132		W2520	FPS389		30	38.89	132.16	50.42	15.918					

WATER PUMP BEARING

(Ball+ball)

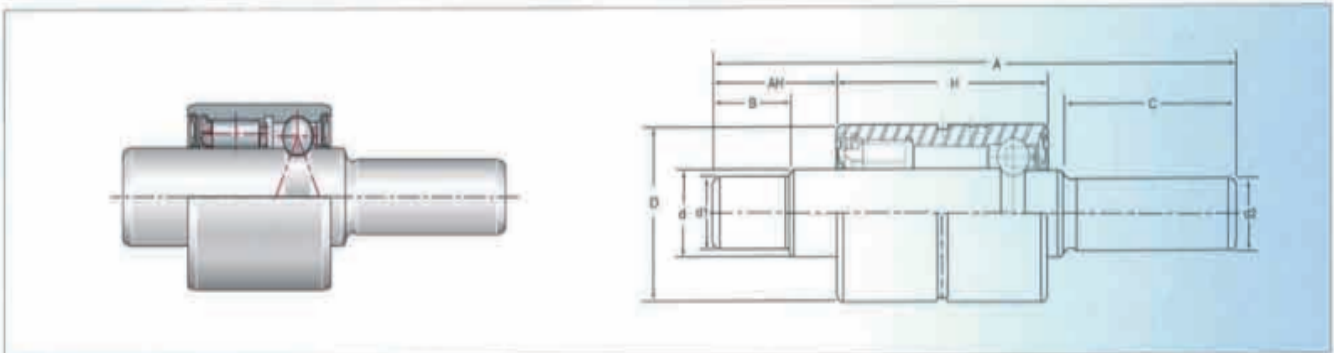
轴承型号 Designation					基本 Boundary dimensions mm									备注 Remarks
EG	NSK	FAG	RHP	KOYO	D	H	A	AH	d	d1	d2	B	C	
WB1630132-1	885104A				30	38.89	132.16	47.85	15.918					
WB1630133				8855113-B	30	38.89	132.54	40.87	15.918					
WB1630133-1				8855113CRSE	30	38.89	132.64	29.77	15.918					
WB1630133-2	885611	W3522-1	FPS661		30	38.89	132.64	29.77	15.938					
WB1630133-3			FPS602		30	38.89	133.1	55.35	15.918					
WB1630133-4	885415	W2524-1			30	38.89	133.25	38.86	15.918					
WB1630134	885113	W2527		8855113BRSE	30	38.89	133.86	42.65	15.918					
WB1630135	885158AA	W2531-1		K885158AA	30	38.89	134.92	33.15	15.918					
WB1630135-1	885437S	W2532	FPS786		30	38.89	135.28	50.85	15.918					
WB1630135-2				885437RSE	30	38.89	135.28	45.59	15.918					
WB1630136			FPS386	885093SRSE	30	38.89	135.74	44.5	15.969					
WB1630136-1	885093	W2534-1		885093S	30	38.89	135.74	52.4	15.918					
WB1630136-2	885158P	W2537	FPS7	WPB16136BRSE	30	38.89	136.4	39.1	15.918					
WB1630137				885637	30	38.89	137.49	40	15.918					
WB1630138		W2542	FPS287		30	38.89	137.67	46.23	15.918					
WB1630138-1			FPS25	885158-1RSE	30	38.89	138.1	40.89	15.918					
WB1630138-2	885158			885158-1	30	38.89	138.1	58.34	15.918					
WB1630138-3		W2543			30	38.89	138.1	45.7	15.918					
WB1630139	885603	W2548-1	FPS397	885603	30	38.89	139.32	35.05	15.918					
WB1630141	885248	W2555	FPS757	885248RSE	30	38.89	141	49	15.918					
WB1630141-1	885458	W2556	FPS885		30	38.89	141.22	38.93	15.918					
WB1630142		W2559			30	38.89	142.1	44.86	15.918					
WB1630143	885141	W2562	FPS19	885141-1	30	38.89	142.88	40.8	15.918					
WB1630144			FPS525		30	38.89	144.28	52.71	15.918		12.703		47.24	
WB1630146	885694S	W2575-1	FPS612	885694	30	38.89	146.2	61.72	15.918					
WB1630150-1	885166C			885166C	30	38.89	150	35.1	15.918					
WB1630150					30	38.89	150	52	15.918	12	M10	50.5	48.5	
WB1630154		W2606			30	38.89	154	34.04	15.918					
WB1630154-1			FPS776	885125C	30	38.89	154.23	29.77	15.918					
WB1630154-2	885613	W3607	FPS722		30	38.89	154.23	29.77	15.918					
WB1630156				885671	30	38.89	155.58	69.95	15.918					
WB1630160	885094	W2629-1		885094S	30	38.89	159.54	76.2	15.918					
WB1630160-1	885136B	W26294		885136B	30	38.89	159.77	62.66	15.918					
WB1630161	885117	W2637		885117	30	38.89	161.47	58.34	15.918					
WB1630166			FPS61		30	38.89	165.85	63.48	15.918					
WB1630167			FPS646		30	38.89	177.09	79.88	15.918					
WB1635073					35	22.5	73	14.5	16		12		34.2	
WB1730071				WPB1730071RS	30	23	71	13.5	17					
WB1730073					30	23	73	17	16					
WB1736091					36	38.89	90.7	14	17		15		34	
WB1938121			FPS135	885800CRSE	38.1	54	120.65	24.260	18.961		15.918		39.675	
WB1938126			FPS470	885832RSE	38.1	54	125.73	30.861	18.961	15.918	15.918	27.432	37.388	
WB1938127-1				885775RSE	38.1	54	127	26.67	18.961	15.938	15.918	11.634	44.45	
WB1938127		WK2509	FPS139	885811RSE	38.1	54	127	31.369	18.961		15.918		38.1	
WB1938127-2				885869RSE	38.1	54	127.51	31.115	18.961	15.918	15.918	14.275	39.878	
WB1938132				885821BRSE	38.1	54	132.08	29.845	18.961	15.918	15.918	12.319	43.18	
WB1938134				W9B134RSE	38.1	54	134.05	37.605	18.961		15.918		39.678	
WB1938134-1				C9DE8530C	38.1	54	134.112	30.353	18.961		15.918		47.244	
WB1938136-2		WK2528-2		885735RSE	38.1	54	135.636	31.877	18.961		15.918		47.244	

WATER PUMP BEARING (Ball+ball)

轴承型号 Designation					基本 Boundary dimensions mm									备注 Remarks
EG	NSK	FAG	RHP	KOYO	D	H	A	AH	d	d1	d2	B	C	
WB1938136-1		WK2537-1	FPS662	885737RSE	38.1		136.398	36.195	18.961	15.918	15.918	12.219	43.434	
WB1938136		WK2538	FPS138	885810RSE	38.1		136.652	36.703	18.961	15.918	15.918	33.02	42.418	
WB1938137				885870RSE	38.1		136.779	40.386	18.961	15.918	15.918	14.275	39.873	
WB1938140-1		WK2550	FPS399	885821RSE	38.1		139.7	35.56	18.961	15.918	15.918	15.392	47.752	
WB1938140-2				W9B140L	38.1		140	33.7	18.961	15.918	15.918	29	49.146	
WB1938140				885720RSE	38.1		140.589	39.624	18.961		15.918		43.815	
WB1938142		WK6558		885842RSE	38.1		141.757	43.84	18.961		15.918		41.021	
WB1938143-1				885815ARSE	38.1		143.256	35.305	18.961		15.918		49.2	
WB1938143				885865ARSE	38.1		143.485	30.838	18.961	15.918	15.918	12.243	45.72	
WB1938144				80DA8530AA	38.1		143.764	41.021	18.961	15.918	15.918	37.5	44.577	
WB1938145				885802RS	38.1		145.796	44.704	18.961		15.918		44.45	
WB1938145-1		WK2574-2	FPS366	885818RSE	38.1		145.796	44.704	18.961		15.918		40.767	
WB1938146				885747RSE	38.1		146.05	36.322	18.961	15.918	15.918	13.716	51.562	
WB1938146-1				885760RSE	38.1		146.05	36.322	18.961	15.918	15.918	33.02	51.562	
WB1938150				885764RSE	38.1		150.52	35.052	18.961		15.918		58.318	
WB1938152				885844RSE	38.1		152.4	35.66	18.961	15.918	15.918	15.265	60.528	
WB1938153-1				885857RSE	38.1		152.908	53.694	18.961	15.918	15.918	28.448	41.783	
WB1938153-2				885865A	38.1		152.908	46.355	18.961	15.918	15.918	28.575	43.032	
WB1938153				885807CRSE	38.1		153.416	45.72	18.961		15.918		50.546	
WB1938154				885825CRSE	38.1		154.229	29.769	18.961	15.918	15.918	8.89	57.15	
WB1940113					40	46	113	23	19	17	15.918	42	20	
WB1940122					40	46	121.5	23	19	17	15.918	20	50.55	
WB1940123					40	46	123	23	19	15.918	15.918	21	52	
WB1940126					40	46	126	30.2	19		12		45	
WB1740136					40	46	136	26	19	17	17	24	62	
WB1942115					42	46	115.5	43	19	13	18	38.5	24	

WATER PUMP BEARING

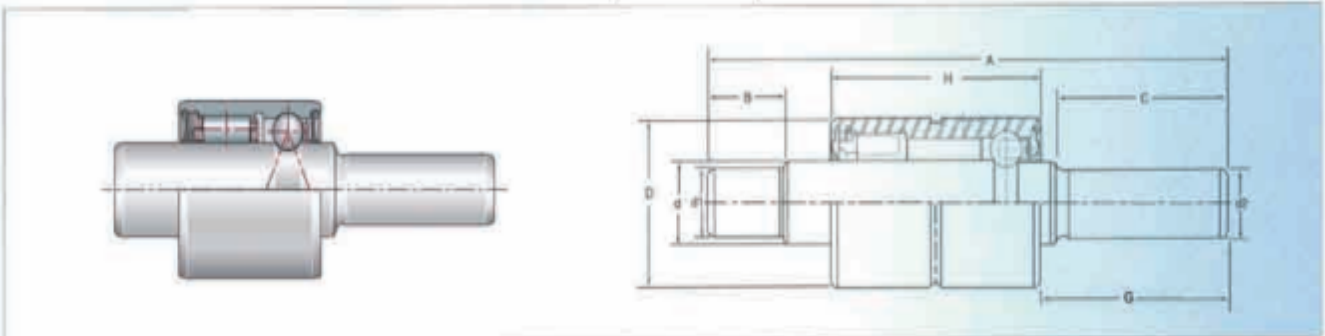
(Roller+ball)



轴承型号 Bearing Designation					基本尺寸 Boundary Dimensions mm										
EG	NSK	FAG	RHP	KOYO	D	H	A	AH	d	d1	d2	B	C		
WR1630087					30	38.8	86.5	13.5	15.918		12		32.7		
WR1630091-2					30	38.89	90.5	14.81	15.918		12		34.5		
WR1630091					30	38.89	91	13.5	15.918		12		36		
WR1630092					30	38.89	92	15.5	16						
WR1630101					30	38.9	101	17.5	15.918						
WR1630102					30	38.9	101.5	18	15.918						
WR1630105					30	38.8	104.5	16.5	15.918		12		48.2		
WR1230106-1					30	38.9	105.7	17.5	15.918	12	12	16	46.7		
WR1630106					30	38.9	106.2	18.5	15.918		12		41.4		
WR1630148					30	38.89	148	28	15.918						
WR1635096					35	38.9	96		15.918		12				
WR1635101				W7R101B	35	39	101	25	17.5	15.918	12	23.5	33.8		
WR1835103					35	39	103.2	26.5	18	15.918	12	24.5	35.7		
WR1835123					35	56	122.6		18		12	28.5	35.7		
WR1938101					38.1	37	101		19	15.918	12	23.2	36.8		
WR1938117					38.1	41.3	117.2		19		15.918		47.4		
WR1938120					38.1	54	120.7		19		15.918		38.4		
WR1938126					38.1	54	126		19	15.918	15.918	14	39		
WR1938128					38.1	54	127.7		19		15.918		40		
WR1938133					38.1	54	133		19	15.918	15.918	12	45		
WR1938134-1					38.1	54	134		19		15.918		47.5		
WR1938134					38.1	54	134.2	22.4	19		15.918		49.7		
WR1938136-4					38.1	54	136.5		19		15.918		58.5		
WR1938139					38.1	54	139.2		19		15.918		46.5		
WR1938155					38.1	54	155.1		19		15.918		59.7		
WR1938157					38.1	54	156.5		19	15.918	15.918	15	53		
WR1938158					38.1	54	158.1		19	15.918	15.918	14.3	57		
WR1938165					38.1	54	165.3		19		15.918		70.4		
WR1938166					38.1	54	166.5		19		15.918		64		

WATER PUMP BEARING


(Roller+ball)



轴承型号 Bearing Designation					基本尺寸 Boundary Dimensions mm										
EG	NSK	FAG	RHP	KOYO	D	H	A	G	d	d1	d2	B	C		
WR2040105					40	42	105	42.5	20		15.918		40.5		
WR2040112					40	44	111.5	45.5	20		15.918		41		
WR2040151					40	50	151	49.5	20		16		44		
WR2247165					47	62.5	165	59.5	22		17		55.5		
WR2552133					52	52	133	51	25		15.918		50		
WR2552138					52	56	138	51	25		15.918		50		
WR2552143					52	56	143	51	25		15.918		50		
WR2552155					52	70	155	51	25		15.918		50		
WR2552162					52	56	162	63	25		15.918		59		
WR2552208					52	56	208	51	25	M14	15.918	18	50		
WR2555127A					55	60	127	42	25		15.918		40.9		
WR2555145					55	60	145	53.5	25	19	15.918	28.5	50		



长鑫实业有限公司
EVERGOLD HOLDING CO., LTD



Add : RM2402, No 3 Building, No 17 Donghai Middle Road, Shinan, Qi...
Website : www.eg-holding.com

