



粉末冶金皮带轮

Sintered Pulley

01

EVERGOLD HOLDING CO., LTD

www.eg-holding.com

OD:Outer diameter,H:Height,TD:Tooth depth,IH:Inner hole height,T:Tooth number,γ:Shaft Dia.



EG-SP001

OD:67.3 H:27 TD:21
IH:13 T:27 Φ15.918



EG-SP001G

OD:67.3 H:27 TD:21
IH:11.5 T:27 Φ15.918



EG-SP002

OD:57.2 H:26.7 TD:26.1
IH:16.2 T:23 Φ15.918



EG-SP003C

OD:59.2 H:38.5 TD:33.4
IH:26.2 T:20 Φ15.918



EG-SP003D

OD:59.2 H:37 TD:29.3
IH:27 T:20 Φ17.2



EG-SP004

OD:62.2 H:34.9 TD:33.3
IH:22.3 T:21 Φ15.918



EG-SP004B

OD:62.2 H:31 TD:29.4
IH:18.4 T:21 Φ15.918



EG-SP005

OD:62.2 H:20.4 TD:28
IH:20.4 T:21 Φ15.918



EG-SP005D

OD:62.2 H:33 TD:28
IH:20.4 T:21 Φ15.918



EG-SP006A

OD:56.4 H:21.6 TD:18.6
IH:8.1 T:19 Φ15.918



EG-SP007

OD:62.5 H:24 TD:21
IH:13.3 T:21 Φ15.918



EG-SP008

OD:56.23 H:29.5 TD:29
IH:10.9 T:19 Φ15.918



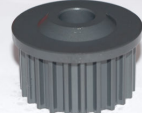
EG-SP009

OD:62.2 H:29 TD:26
IH:16.7 T:25 Φ15.918



EG-SP010

OD:56 H:39.3 TD:34
IH:26 T:19 Φ15.918



EG-SP010C

OD:56 H:41.5 TD:36.3
IH:27 T:19 Φ15.918



EG-SP011

OD:57.2 H:39.5 TD:29
IH:27.5 T:23 Φ15.918



EG-SP012

OD:56.2 H:37 TD:28.55
IH:27 T:19 Φ17.2



EG-SP013

OD:59.5 H:36.5 TD:28.5
IH:26 T:20 Φ17.2



EG-SP014

OD:54.8 H:37.4 TD:28
IH:24.5 T:22 Φ15.918



EG-SP015

OD:54.54 H:42 TD:37.2
IH:25.5 T:22 Φ15.918

OD:Outer diameter,H:Height,TD:Tooth depth,IH:Inner hole height,T:Tooth number,ϕ:Shaft Dia.



EG-SP016

OD:59.3 H:40 TD:32
IH:28 T:20 ϕ15.918



EG-SP017

OD:59.32 H:40 TD:23.2
IH:28.1 T:20 ϕ12



EG-SP018

OD:62.3 H:31.8 TD:26.5
IH:19.4 T:21 ϕ15.918



EG-SP020

OD:52 H:41 TD:35 IH:29
ϕ15.918



EG-SP021

OD:62.5 H:39 TD:31
IH:27 T:25 ϕ15.918



EG-SP022

OD:56.5 H:45 TD:28
IH:27 T:19 ϕ17.2



EG-SP023

OD:53.2 H:36 TD:25
IH:23 T:18 ϕ15.918



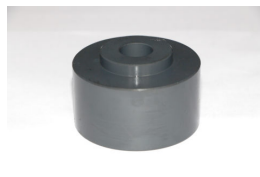
EG-SP023C

OD:53.2 H:36 TD:30.5
IH:23 T:18 ϕ15.918



EG-SP024

OD:62 H:41 TD:30 IH:27
ϕ15.918



EG-SP024B

OD:62 H:38.5 TD:32.5
IH:27 ϕ15.918



EG-SP024C

OD:62 H:41 TD:35
IH:30.6 ϕ15.918



EG-SP025

OD:59.26 H:27 TD:27
IH:14 T:20 ϕ15.918



EG-SP026

OD:73 H:23 TD:5 IH:10.5
T:23 ϕ17.5



EG-SP027C

OD:56 H:33.5 TD:32.9
IH:21.1 T:19 ϕ15.918



EG-SP029D

OD:57 H:24 TD:21 IH:9.5
T:23 ϕ15.918



EG-SP031

OD:56.28 H:19.5 TD:16.5
IH:5.7 T:19 ϕ15.918



EG-SP032

OD:59.3 H:43 TD:36.4
IH:28 T:20 ϕ15.918



EG-SP034

OD:59.3 H:34.2 TD:16.5
IH:23 T:20 ϕ15.918



EG-SP035

OD:46 H:34 TD:27 ϕ35



EG-SP036

OD:70 H:49.5 TD:33.2
IH:36.3 ϕ17.5

OD:Outer diameter,H:Height,TD:Tooth depth,IH:Inner hole height,T:Tooth number, \dot{y} :Shaft Dia.



EG-SP038

OD:61.9 H:47 TD:32.8
IH:30.5 T:25 Φ 12



EG-SP041

OD:65 H:34 TD:16
IH:20.7 T:24 Φ 15.918



EG-SP042

OD:58.26 H:34.2
TD:23.65 IH:22.8 T:23



EG-SP047

OD:50 H:35 TD:25 IH:21
 Φ 15.918



EG-SP048

OD:77.5 H:39 TD:21
IH:25 Φ 15.918



EG-SP050

OD:69.7 H:30 TD:27.9
IH:18 T:28 Φ 15.918



EG-SP053B

OD:54.7 H:35 TD:30
IH:20 T:22 Φ 15.918



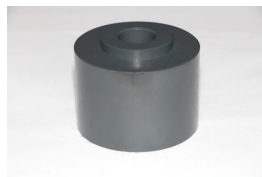
EG-SP054

OD:54.7 H:39.5 TD:37.5
IH:27 T:19 Φ 15.918



EG-SP055

OD:56.3 H:33.5 TD:33.5
IH:21 T:19 Φ 15.918



EG-SP056

OD:60 H:46.8 TD:41.9
IH:33.6 Φ 17.5



EG-SP057B

OD:59.3 H:45.5 TD:33
IH:28 T:20 Φ 15.918



EG-SP057E

OD:59.3 H:45.3 TD:34.2
IH:31 T:20 Φ 15.918



EG-SP057G

OD:59.3 H:45.5 TD:33.5
IH:30 T:20 Φ 15.918



EG-SP058

OD:60 H:46.5 TD:31
IH:33.5 Φ 15.918



EG-SP059

OD:59.6 H:49.3 TD:33
IH:34.3 T:24 Φ 15.918



EG-SP059B

OD:59.6 H:49.3 TD:33
IH:34.3 T:24 Φ 17.2



EG-SP060

OD:64 H:40 TD:22 IH:29
 Φ 19



EG-SP061

OD:59.9 H:42 TD:33



EG-SP062

OD:45 H:26.5 TD:20.2
IH:18 T:29 Φ 12



EG-SP065B

OD:57.3 H:23.5 TD:21.5
T:23

OD:Outer diameter,H:Height,TD:Tooth depth,IH:Inner hole height,T:Tooth number,γ:Shaft Dia.



EG-SP066

OD:64.9 H:36.5 TD:28
IH:26.6 T:26 Φ17.2



EG-SP067

OD:52.5 H:46.5 TD:26.8
IH:29 T:20 Φ12



EG-SP068

OD:54.8 H:40 TD:29
IH:28 T:22 Φ15.918



EG-SP069A

OD:56 H:40.5 TD:25.9
IH:27 T:19 Φ17.2



EG-SP069B

OD:56 H:40.5 TD:25.9
IH:27 T:19 Φ17.15



EG-SP070

OD:64 H:50.5 TD:36.5
IH:38 Φ17.5



EG-SP071

OD:60.6 H:52.5 TD:31
IH:34.5 Φ15.918



EG-SP072

OD:56 H:45 TD:26.2
IH:23 Φ12



EG-SP073

OD:56 H:49.5 TD:36.5
IH:28 Φ15.918



EG-SP076

OD:60.23 H:30.5 TD:26.5
IH:19.5 T:31 Φ15.918



EG-SP080

OD:62.2 H:30.5 TD:24
IH:16.5 T:21 Φ15.918



EG-SP084

OD:71.6 H:31 TD:30.7
IH:11.1



EG-SP085

OD:56.3 H:39.5 TD:34
IH:26 T:19 Φ15.918



EG-SP086

OD:65 H:40.1 TD:33.5
IH:28.9 Φ22



EG-SP088

OD:66 H:37.5 TD:35
IH:23.7 Φ17



EG-SP090

OD:57 H:34.2 TD:23.4
IH:22.2 T:23 Φ15.918



EG-SP095

OD:69.8 H:28.2 TD:5.4
IH:16 T:22 Φ15.918



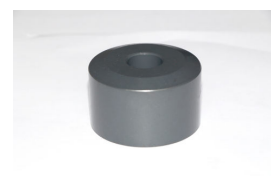
EG-SP097

OD:71.5 H:31 TD:27
IH:11 T:24



EG-SP099

OD:47.2 H:29.5 TD:21.9
IH:19.3 T:19



EG-SP102

OD:55 H:33 TD:30 IH:24
Φ17.2

OD:Outer diameter,H:Height,TD:Tooth depth,IH:Inner hole height,T:Tooth number,γ:Shaft Dia.



EG-SP110B

OD:56.3 H:29 TD:29
IH:16.5 T:19 Φ 15.918



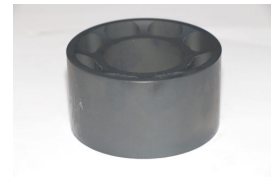
EG-SP110D

OD:56.3 H:28.8 TD:28.5
IH:16.3 T:19 Φ 15.918



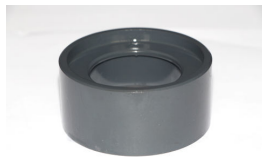
EG-SP111

OD:43.4 H:19.4 TD:11
IH:11.5 T:28 Φ 12



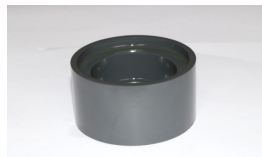
EG-SP112

OD:74 H:40



EG-SP113

OD:74 H:34



EG-SP114

OD:74 H:38.3



EG-SP118B

OD:56.2 H:22.2 TD:19.6
IH:2 T:19



EG-SP123

OD:70 H:30.5 TD:28.5
IH:18 T:28 Φ 15.918



EG-SP133

OD:56.2 H:39.5 TD:33.8
IH:26 T:19 Φ 15.918



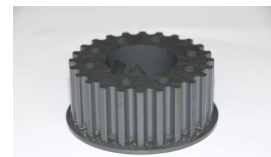
EG-SP135

OD:56.1 H:28.5 TD:28.5
IH:16.2 T:19 Φ 15.918



EG-SP136

OD:59.7 H:41.2 TD:25.5
IH:26.5 T:24 Φ 15.918



EG-SP141

OD:69.8 H:34.2 TD:31.2
T:21



EG-SP143

OD:74 H:40.3



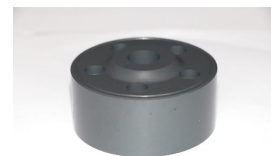
EG-SP146

OD:57.26 H:28.4 TD:26.5
IH:12 T:23 Φ 15.918



EG-SP147

OD:57 H:24 TD:21 IH:8
T:23 Φ 15.918



EG-SP148

OD:70.92 H:35 TD:30.5
IH:24.5 Φ 15.918



EG-SP150

OD:59.15 H:39.5 TD:34
IH:26.5 T:20 Φ 15.918



EG-SP154

OD:59.27 H:45.5
TD:35.95 IH:33.3 T:20



EG-SP157

OD:68 H:42 IH:29.5
 Φ 15.918



EG-SP163

OD:56.3 H:30.4 TD:26.5
IH:19.2 T:29 Φ 15.918