



粉末冶金法兰

Sintered Hub

01

**EVERGOLD HOLDING CO., LTD**

[www.eg-holding.com](http://www.eg-holding.com)



EG-SH001

OD:60 H10  $\Phi$ 15.918

EG-SH001B

OD:60 H10  $\Phi$ 15.918

EG-SH002

OD:55 H19  $\Phi$ 15.918

EG-SH002C

OD:55 H21  $\Phi$ 15.918

EG-SH003B

OD:58 H20.9  $\Phi$ 15.918

EG-SH003C

OD:58 H15  $\Phi$ 15.918

EG-SH004B

OD:65 H8.5  $\Phi$ 12

EG-SH004E

OD:65 H8.5  $\Phi$ 17.2

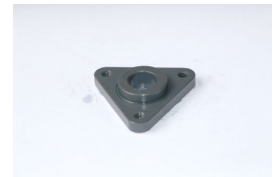
EG-SH006

OD:56 H12.5  $\Phi$ 12

EG-SH008B

OD:64 H14  $\Phi$ 15.918

EG-SH009

OD:64 H11.5  $\Phi$ 17.2

EG-SH009C

OD:64 H11.9  $\Phi$ 15.918

EG-SH010C

OD:52 H13  $\Phi$ 15.918

EG-SH010D

OD:52 H11  $\Phi$ 12

EG-SH012

OD:72 H12  $\Phi$ 15.918

EG-SH013

OD:70 H16  $\Phi$ 17.2

EG-SH014

OD:50 H7  $\Phi$ 15.918

EG-SH015

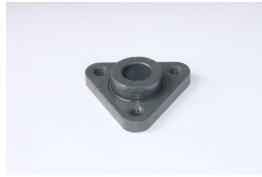
OD:58 H13  $\Phi$ 15.918

EG-SH016

OD:65 H16  $\Phi$ 17

EG-SH017

OD:68 H15  $\Phi$ 15.918



EG-SH017B

OD:68 H17  $\Phi$ 17

EG-SH018

OD:70 H11.8  $\Phi$ 15.918

EG-SH019

OD:78 H23  $\Phi$ 15.918

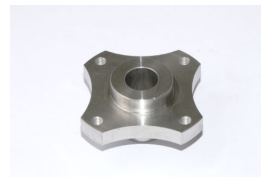
EG-SH020

OD:87 H14.8  $\Phi$ 15.918

EG-SH021

OD:58 H12  $\Phi$ 15.918

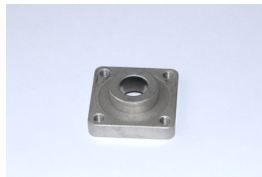
EG-SH022

OD:53.7 H12.5  $\Phi$ 12

EG-SH023

OD:68 H31  $\Phi$ 15.918

EG-SH024

OD:58 H12.5  $\Phi$ 12

EG-SH025

OD:63.74 H17.5  
 $\Phi$ 15.918

EG-SH026

OD:51.96 H13  $\Phi$ 12

EG-SH027

OD:62 H11.5  $\Phi$ 15.918

EG-SH028

OD:65.8 H14  $\Phi$ 15.918

EG-SH030

OD:58 H18  $\Phi$ 17

EG-SH031

OD:66.5 H15  $\Phi$ 15.918

EG-SH033

OD:86.5 H15.5  $\Phi$ 15.918

EG-SH034

OD:70.7 H11  $\Phi$ 15.918

EG-SH035

OD:57 H12  $\Phi$ 15.918

EG-SH036

OD:57 H12  $\Phi$ 15.918

EG-SH037

OD:56 H15.2  $\Phi$ 15.918

EG-SH038

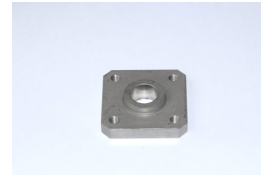
OD:58 H15.2  $\Phi$ 15.918



EG-SH039B

OD:84 H19.2  $\Phi$ 15.918

EG-SH040

OD:63.5 H23  $\Phi$ 15.918

EG-SH042

OD:64.6 H12  $\Phi$ 15.918

EG-SH043

OD:53.8 H10  $\Phi$ 15.918

EG-SH044

OD:83.5 H9.5  $\Phi$ 17.2

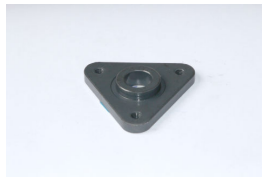
EG-SH045

OD:70 H20.5  $\Phi$ 15.918

EG-SH049

OD:76 H17  $\Phi$ 15.918

EG-SH050

OD:58 H25  $\Phi$ 17

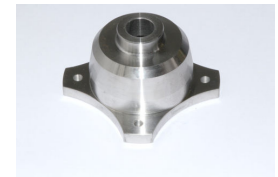
EG-SH051

OD:72 H11  $\Phi$ 15.918

EG-SH052

OD:70 H13  $\Phi$ 15.918

EG-SH055

OD:76.5 H12.6  $\Phi$ 17.5

EG-SH057

OD:90 H45  $\Phi$ 15.918

EG-SH059

OD:68 H18.2  $\Phi$ 15.918

EG-SH060

OD:50 H12  $\Phi$ 15.918

EG-SH064

OD:87.88 H15.5  
 $\Phi$ 15.918

EG-SH065

OD:51 H23  $\Phi$ 15.918

EG-SH066

OD:86 H36  $\Phi$ 15.918

EG-SH073

OD:76 H24  $\Phi$ 15.918

EG-SH074

OD:66.8 H11.8  $\Phi$ 15.918

EG-SH075

OD:52.8 H11  $\Phi$ 12



EG-SH076

OD:67.8 H11.5  $\Phi$ 17.5



EG-SH079

OD:63 H10.5  $\Phi$ 12



EG-SH096

OD:64 H11.2  $\Phi$ 15.918




EG-SH098

OD:85.9 H18.1  $\Phi$ 15.918



长鑫实业有限公司  
EVERGOLD HOLDING CO., LTD

---



Add : RM2402, No 3 Building, No 17 Donghai Middle Road, Shinan, Qi...  
Website : [www.eg-holding.com](http://www.eg-holding.com)

